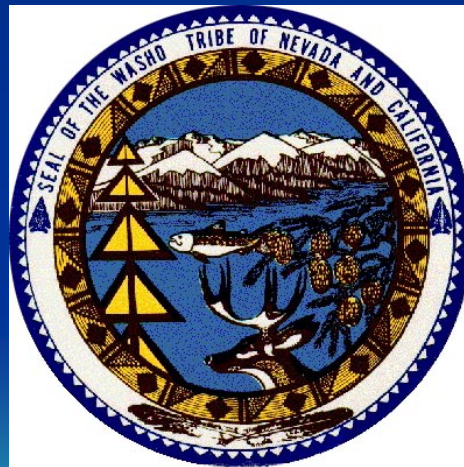


Washoe Tribe of Nevada and California Tribal Historic Preservation Office



THPO

- The Tribal Historic Preservation Office (THPO) was formed in 2006
- The THPO is the equivalent to the State Historic Preservation Office or SHPO
- THPO has the responsibility of governing all aspects of cultural affairs on Tribal Lands
- Duties include the consultation process with the many agencies and collaborators



The Environment and Culture

- The Washoe belief of the natural and cultural environment are tied to each other and cannot be separated
- The Washoe Tribe has seen many changes in our native homeland and most of the changes have not been very good. The negative affects have impacted the people and the environment
- When we talk of the Sierra Nevada that includes the lower elevation inter-relationships of the ecosystems adjoining the Sierras



Brief Washoe History

- The Washoe Tribe has occupied the Sierra Nevada for thousands of years, with Lake Tahoe as the center of Washoe life and history
- Our traditional territory and core area encompassed a large portion of the Sierra Nevada
- The Washoe were and are still dependent on the environment. They had intimate knowledge of their environment and utilized the resources to the fullest but without depleting the source
- The Washoe were not just visitors to the land but were part of the environment, just as any terrestrial inhabitants fulfilled a niche so too were the Washoe
- Because the native was taken out of the environment his abilities and knowledge has been lost, but practices still continue today



- The Washoe Tribe has always been very concerned with the environment, in the early days of American expansion the Washoe witnessed the wanton depletion and destruction of the environment and made numerous complaints to the President of the United States and the governor of Nevada for the protection of the lands, but they were only “Indians”
- A direct result and effect of the depleted resources resulted in the impoverished life ways of the native people that were dependant upon the environment
- To this day the Tribe is involved with many agencies and organizations in our traditional territory for the protection, preservation and management of the Sierra Nevada and its diverse ecosystems



Water Quality



Water Quality

- **Water Quality is probably the biggest concern and issue facing Tribal needs**
- **In Washoe culture water is life and nothing can survive without it so to is the people and environment**



In Response

- In response to water quality issues the Washoe Environmental Protection Department (WEPD) has established water quality programs in the Tribe
- WEPD has been involved with many agencies and organizations for water quality management

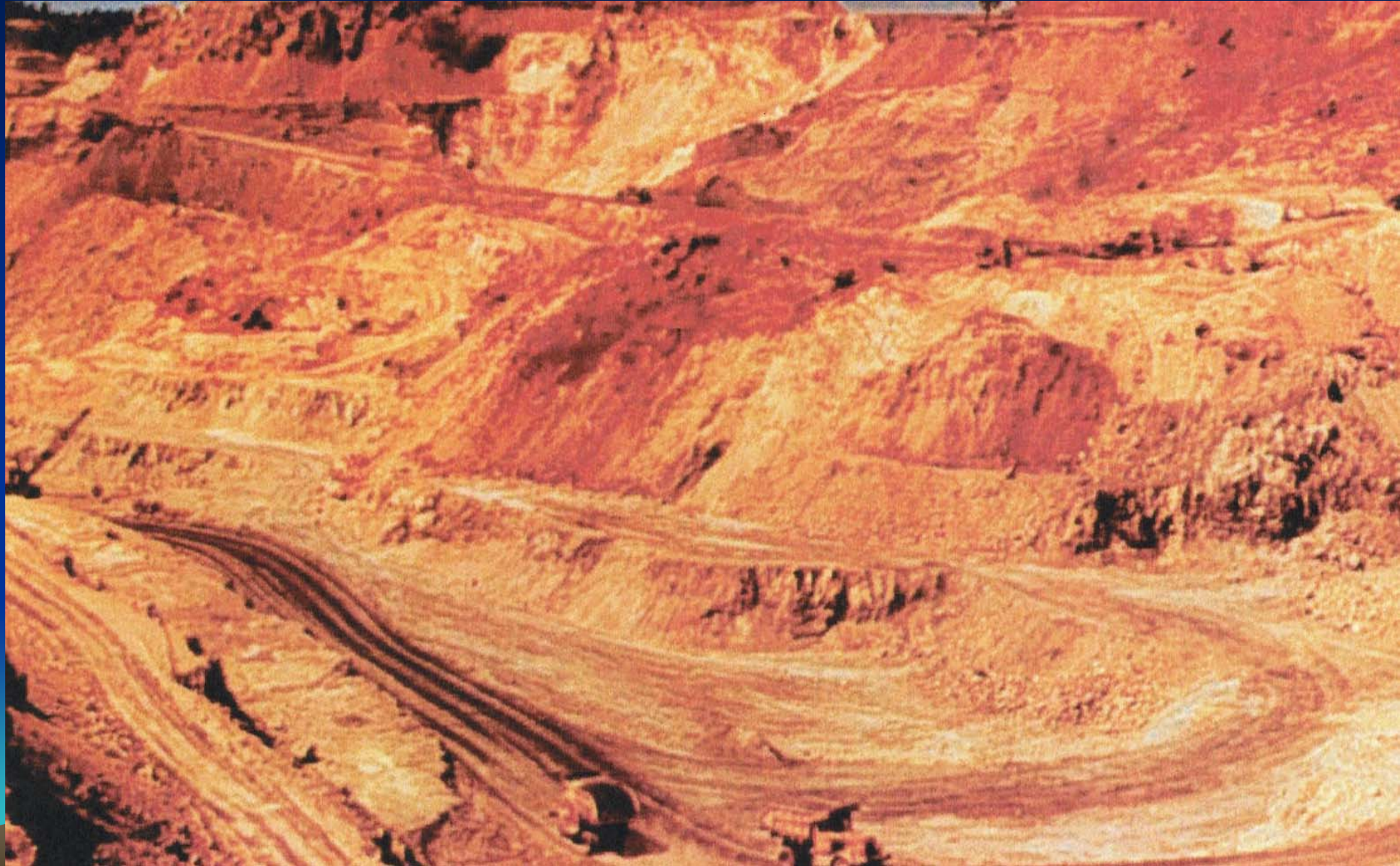


Tribal Water Quality Programs

- EPA Non Point Source Program
- Water Quality Program
- Storm Water Management
- Flood Control Program
- Federal Energy Regulatory Commission-working with the hydroelectric agencies; SMUD, PCWA, PG&E etc., for the relicensing of the facilities. The tribe maintains consultation with the agencies including water quality
- Stream and River Restoration Projects using Bio-engineering techniques utilizing natural resources native to the area



Mining



Mining

- The mining legacy for some represents wealth and glitter but to others mining represents poisoned streams, dead wildlife, scarred landscapes and barren sterile and toxic lands left for future generations, mining is contrary to Washoe beliefs
- The Washoe Tribe has been involved with remediation efforts of Leviathan Mine Superfund Site located in Alpine County California
- The mine has discharged Acid Mine Drainage (AMD) that has affected a watershed
- The waters from the mine drain directly through Washoe Indian Allotments and into the Carson River



Wildlife and Habitat loss



© Ron Niebrugge

Wildlife Species that have disappeared from Washoe Country

- Grizzly Bear-*Taba*
- Wolves-*Tool-leez-ah*
- Big Horn Sheep-*Ogal*
- Lahonton Cutthroat Trout-*Ut-ti-beh*
- *Although gone from the lands they still live on in our stories and will always be part of Washoe Culture*



- Deer migration routes have been disrupted and the Mule Deer has played an important role in the Washoe life; there are certain rituals associated with a young mans first deer kill. Very important aspect with keeping Washoe culture alive and meaningful
- In response the Washoe Tribe has set aside Tribal lands for the protection of the Mule Deer and the habitat
- Even with the established sanctuary, hunters come in through the fence and randomly kill any and all deer in their path



- Evidence of mass deer killings have been found on the ranch lands
- These people have no respect for other peoples efforts to protect wildlife and certainly no respect for wildlife
- Our ancient beliefs taught us to take only what can be used and leave the rest to repopulate and provide for tomorrow



Plant Use



- From the beginning of time the Washoe have depended on plants for food, medicines and utilitarian uses
- Over the years native practices has declined as a direct result of loss of culturally important plants
- We are working with the different kland managers to carry on with Traditional plant gathering activities
- We are working with the Lake Tahoe Basin Management Unit for the Meeks Meadow native people and plant restoration project



- The Washoe used materials grown from the land and returned to the land without leaving toxic releases



Overpopulation

- Overpopulation is the biggest contributor to environmental consequences and the degradation of the environment
- In the old days the Washoe were part of the land and so everything co-existed
- Now the average person is only a visitor
- With population comes all the problems associated with urban sprawl and pollution



Fire



Fire

- Fire has played an important role in the history of the Sierra Nevada Mountains and the Washoe knew about fire effects and the benefits of fire and the relationship to the environment
- It has been told the Washoe utilized fire for their benefit, however knowledge has been mostly forgotten due to removal from the lands and unlawful practices. However we do know they set the fires in late autumn when they left the area for lower elevations and it was set in vegetation to promote growth that was important for foods, medicines, utilitarian uses and wildlife forage



- The Tribe has been advocating fire use for years and they support the natural fire use as a tool for managing the lands and we know that the environment is dependent on fire for a healthy forest and ecosystem
- The Tribe would like to see the return of fire in the environment
- The Tribe is currently working on a project to re-introduce fire back to the land as a management tool, this project may prove to be invaluable



Timber Management

- We understand the importance of a healthy forest, and because political interests dictate how the forest is managed our national forests are suffering,
- As a result of an unhealthy forest and fire exclusion nature sends in insects to manage the forest: this is the natural process
- We have set aside our timber lands as a preserve to maintain a forest setting for all tribal members
- On our Tribal Lands with timber, we have initiated a timber management plan to treat the stands and keep a healthy forest
- The tree removal will help with reducing fire spread



Invasive Plants and Animals

- We are seeing more and more invasive species being introduced to the Sierra
- Cheat grass has now become another plant community in the environment
- Pike in the reservoirs that took years of efforts and thousands of dollars to remove from the ecosystem: that project is being monitored
- The Tribe has a Weed Abatement Program to counter the weed problem, and we are working collaboratively with other agencies in a unified attack on weeds
- Culturally; the native flora and fauna cant compete with the envasives and as a result, the resources have been limited to areas free of envasives and chemical applications



THPO Contact

- Darrel Cruz, CRO/THPO Officer
- Tribal Historic Preservation Office
919 Hwy 395 South
Gardnerville, NV. 89410
- darrel.cruz@washoetribe.us
- (775) 265-8692

